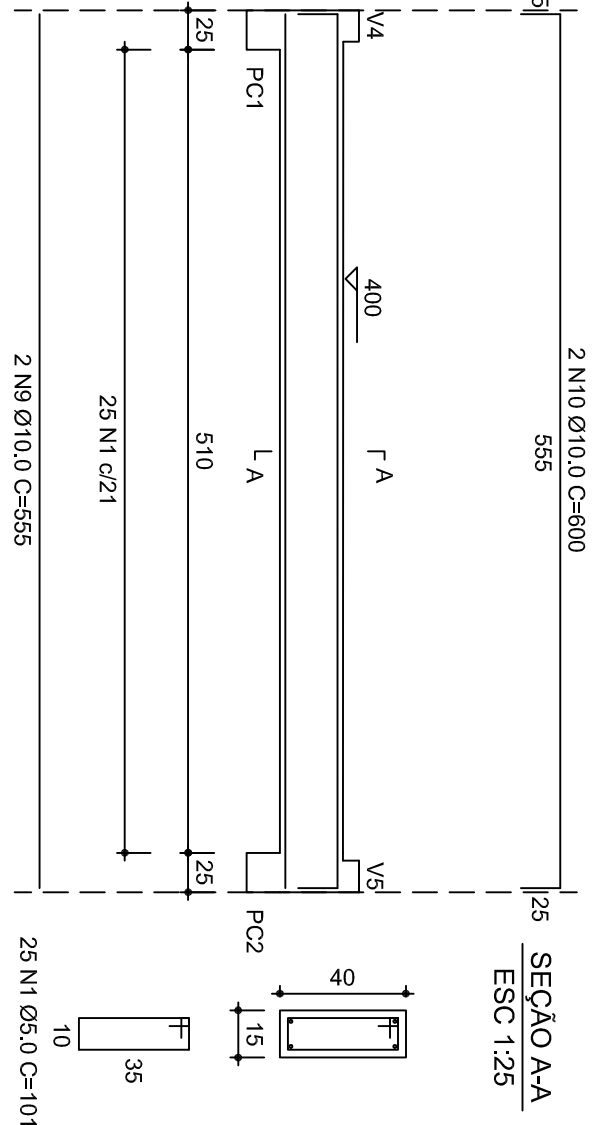
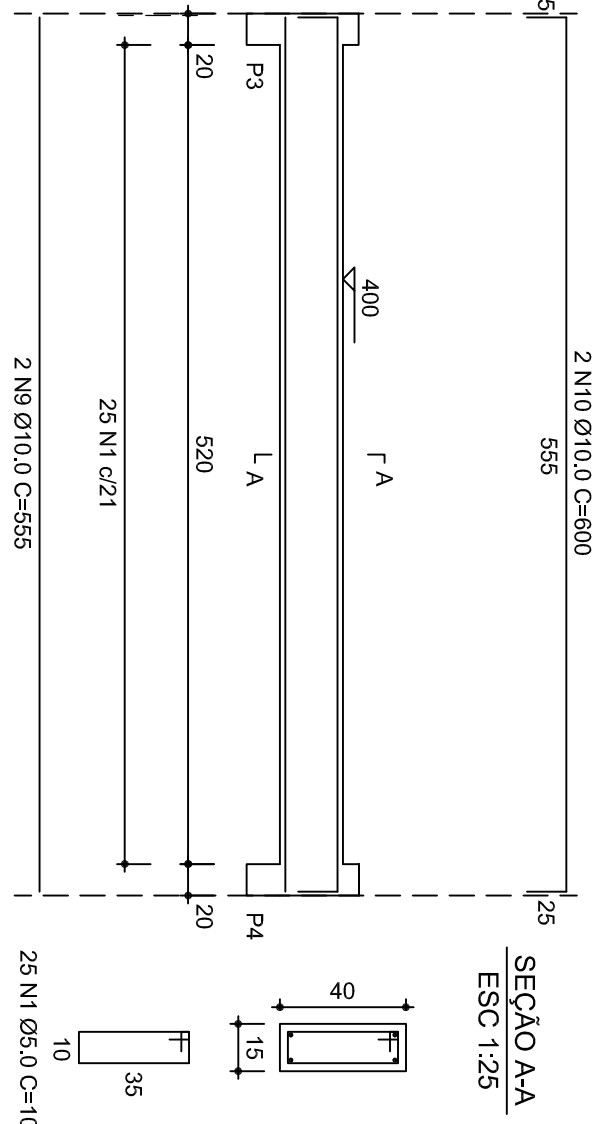


DETALHE ARMADURA VIGAS

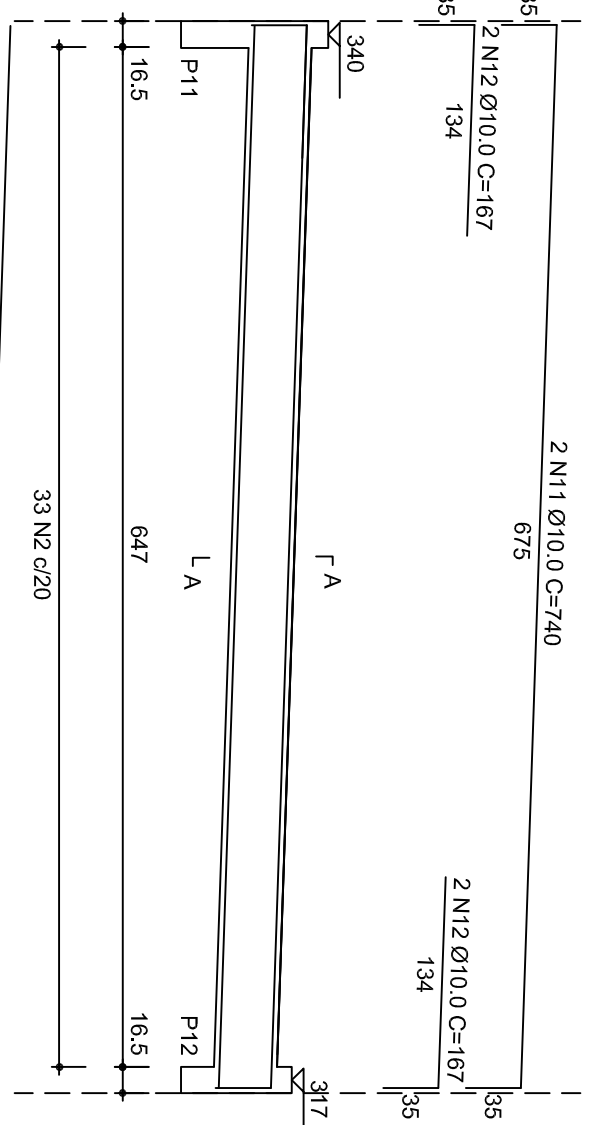
V1



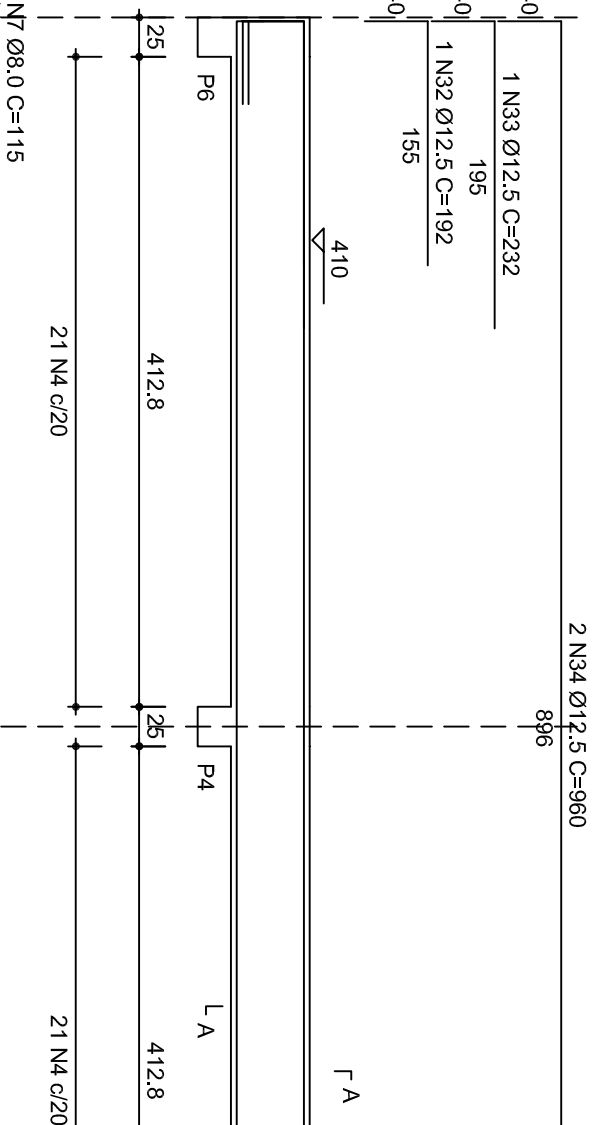
V2



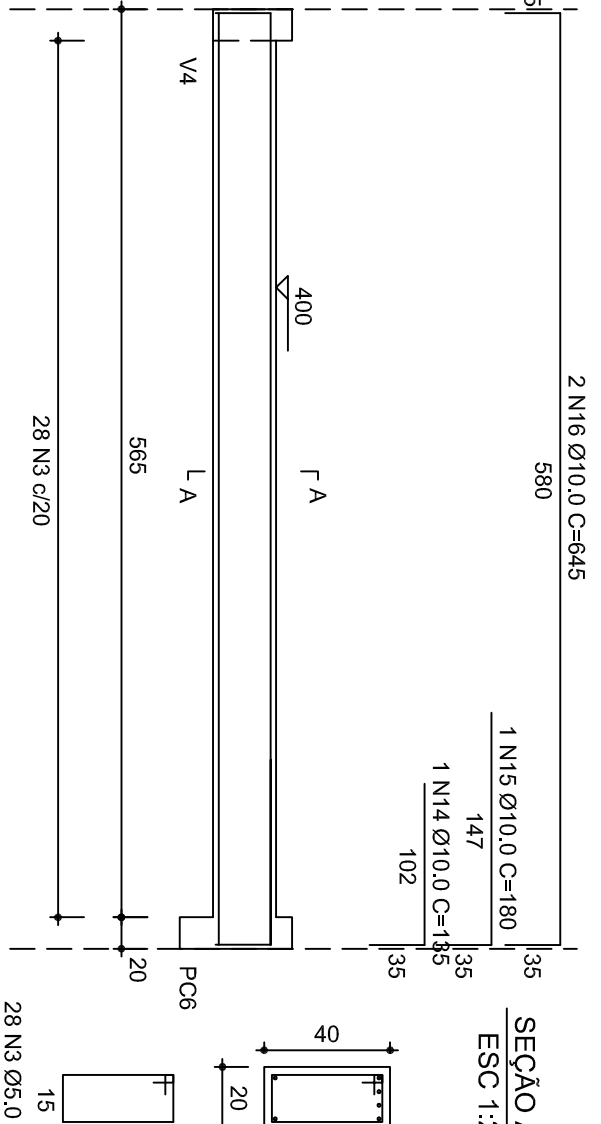
V3



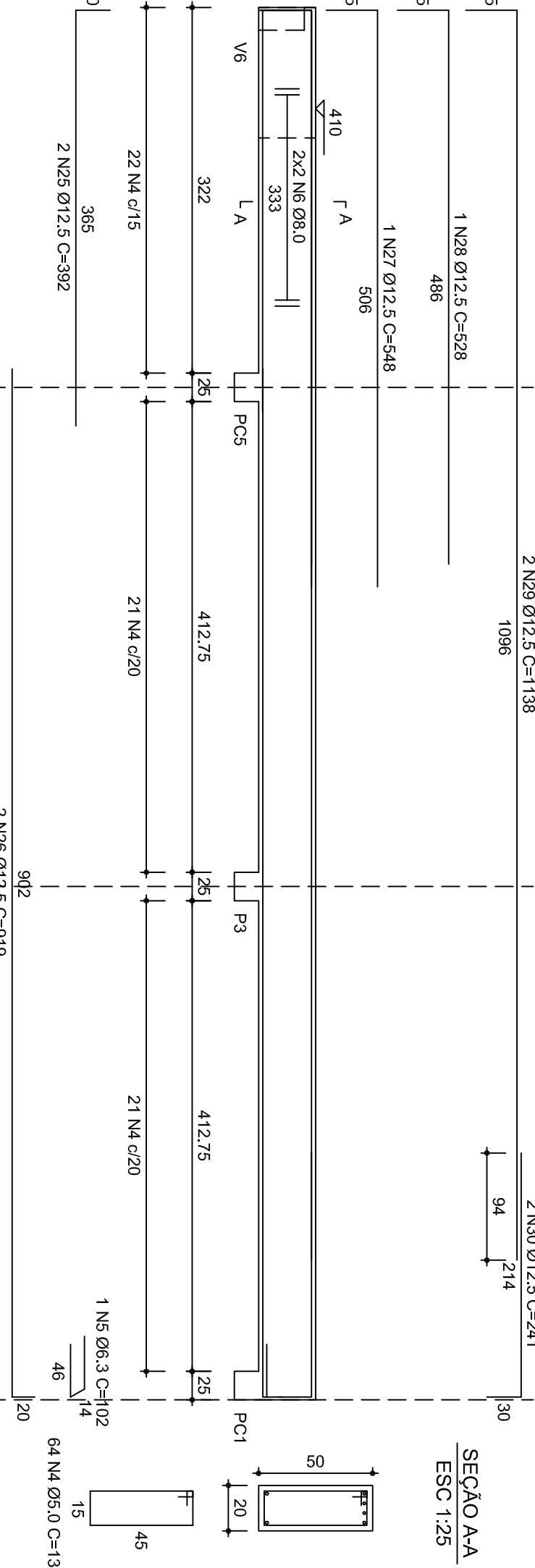
V5



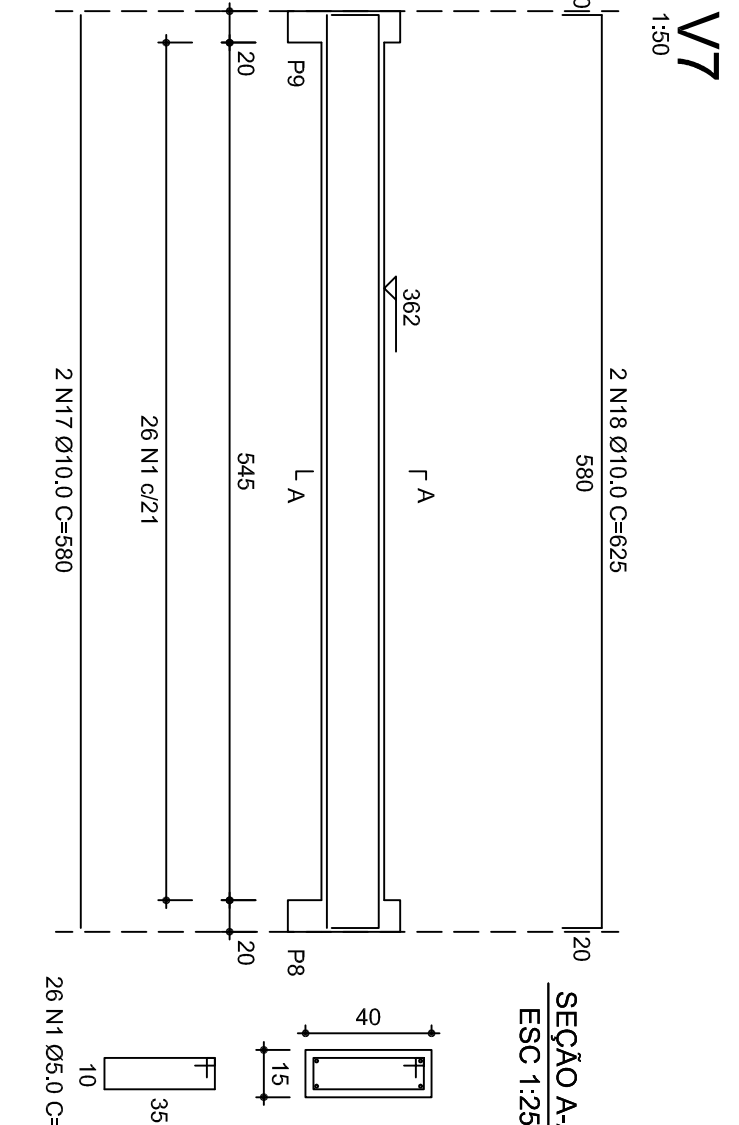
V6



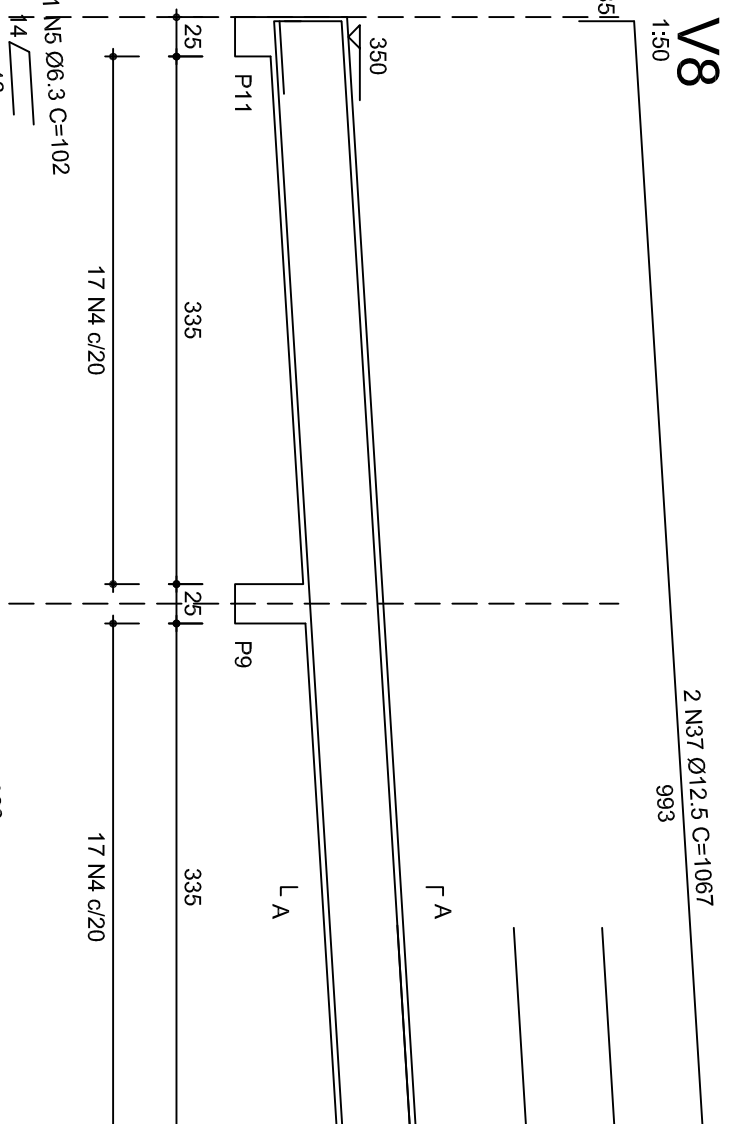
V4 (Detalhe)



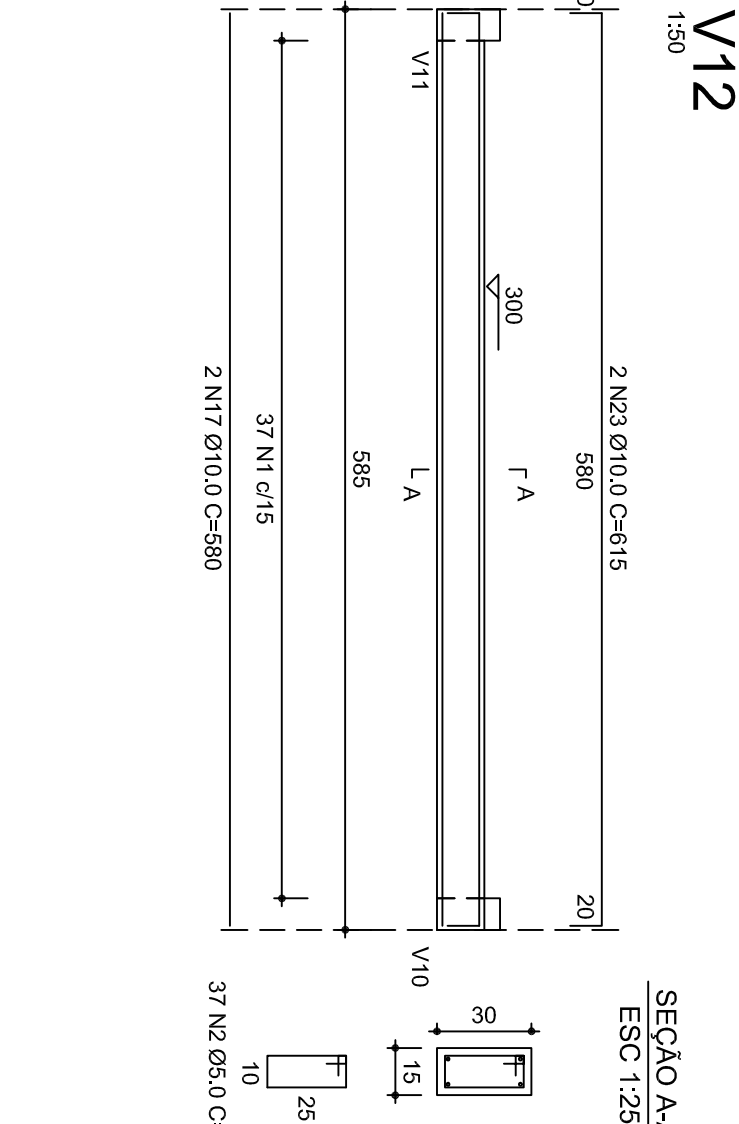
V7



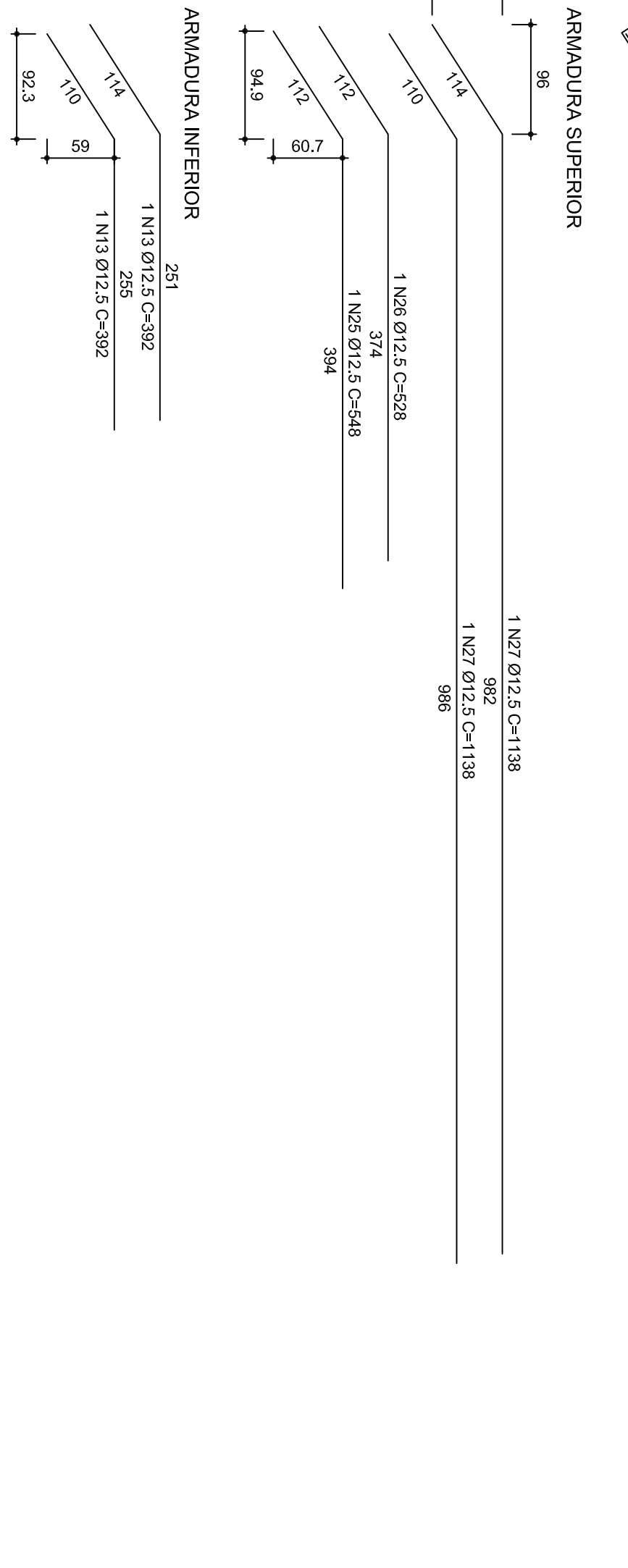
V8



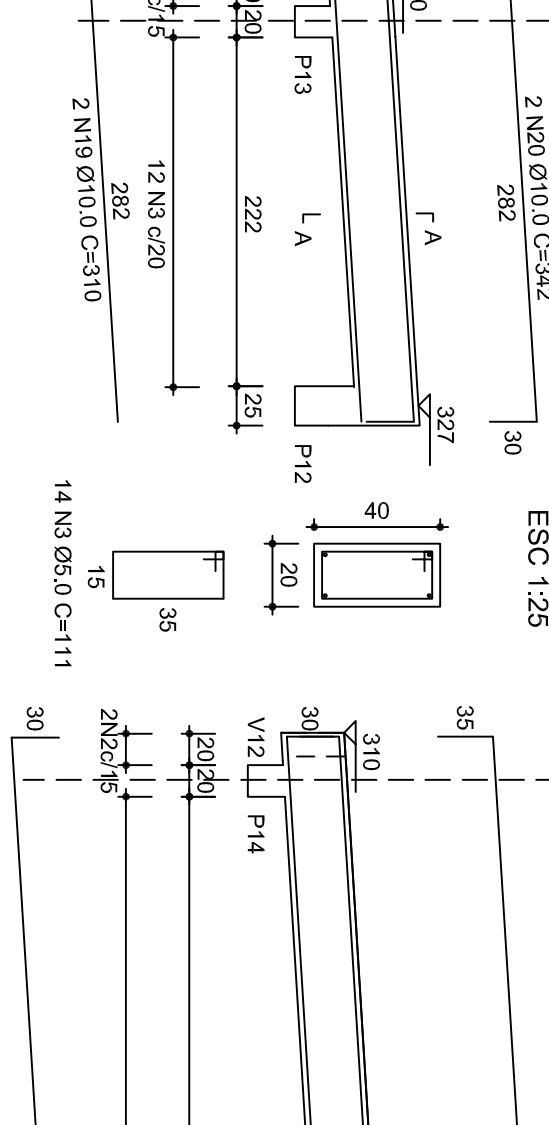
V12



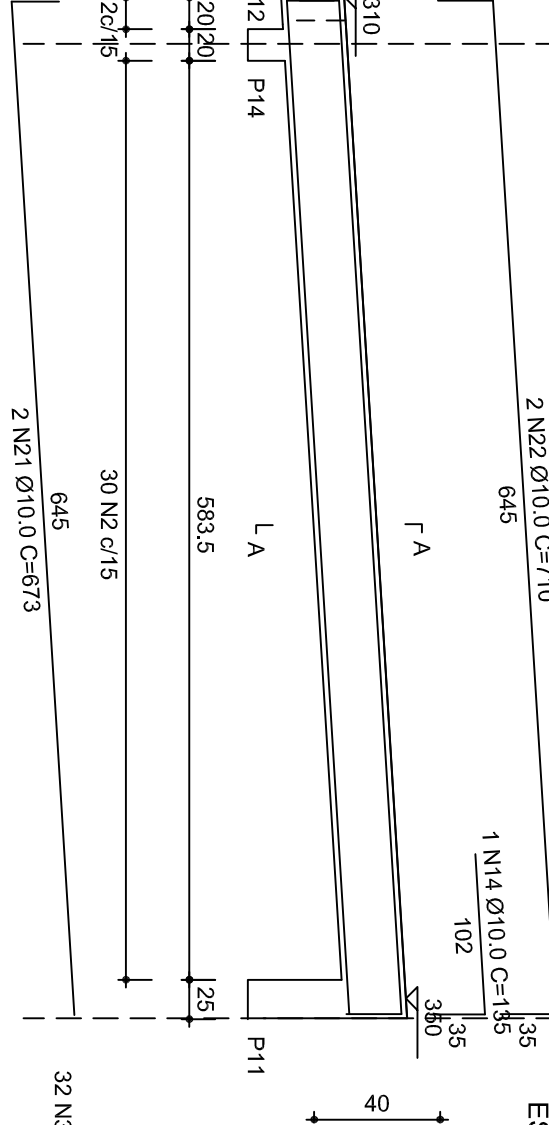
PLANTA BARRA



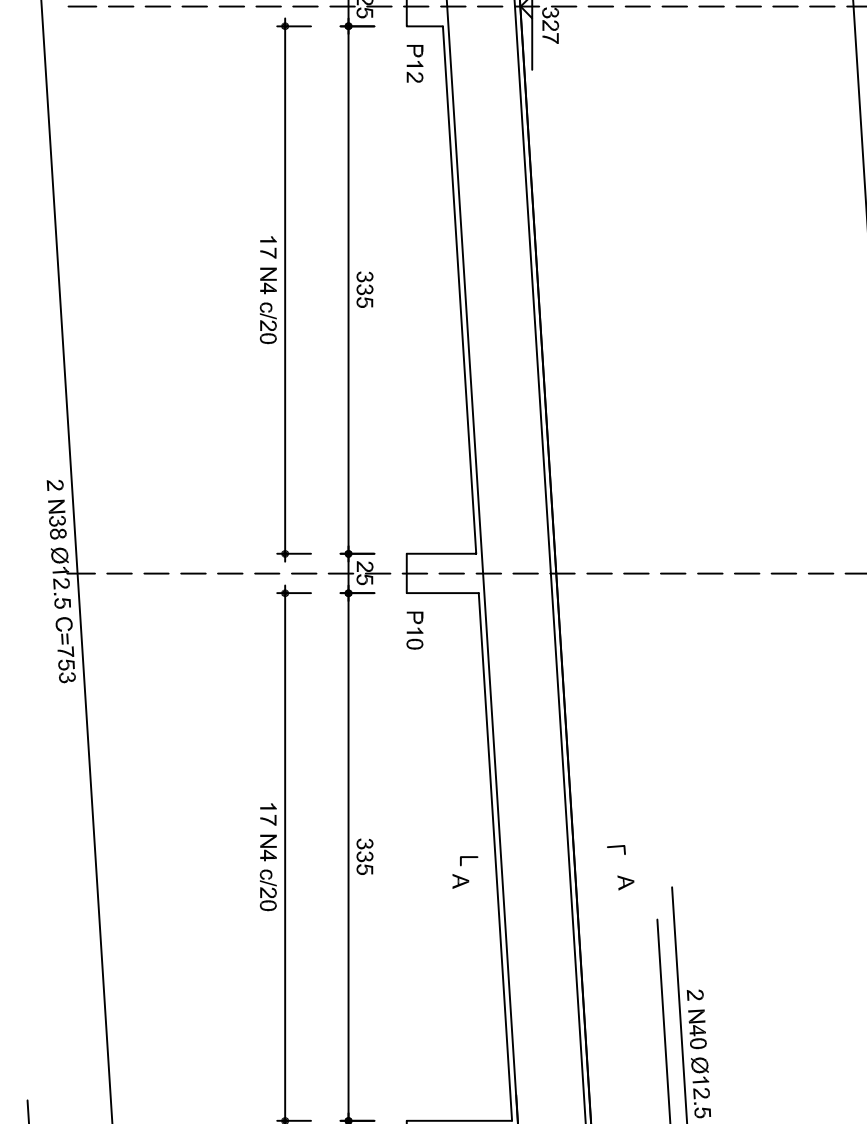
V10



V11



V9



RELACAO DO AÇO

ACO	N	DIAM	Q	UNF	C.TOTAL
60	1	6.0	79	81	79
V1	2	6.0	317	81	317
V4	4	6.0	1267	81	1267
V6	8	6.0	2534	81	2534
V8	16	6.0	5068	81	5068
V10	32	6.0	10136	81	10136
V11	64	6.0	20272	81	20272
V12	128	6.0	40544	81	40544

ACO	DIAM	C.TOTAL	PESO (Kg)
C-60	6.0	18.3	7.5
C-40	12.5	253.6	246.1
PESO TOTAL		509.8	75.5

Valor constante (C-25) = 1.75 kg/m³
Valor médio do concreto = 24.0 kg/m³



LOCAL:	CHAVECO - SC	FASE:	EXECUTIVO	ESCALA:	1:25 E 1:50
OBRA:	BLOCO C	REVISÃO Nº:	R00	TAMANHO FOLHA:	1183X20
PROJETO ESTRUTURAL - MAPA		DATA:	03/08/2018	Nº PROJEC:	
DESENHADO POR:	Rodrigo Emmer				
DE APROVAÇÃO DE VIGAS					
ENDEREÇO:	RODOVIA SP-484 - KM 02, FRONTEIRA SUL	NOME DO ARQUIVO:			