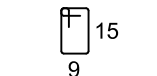
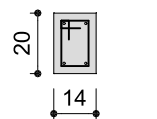
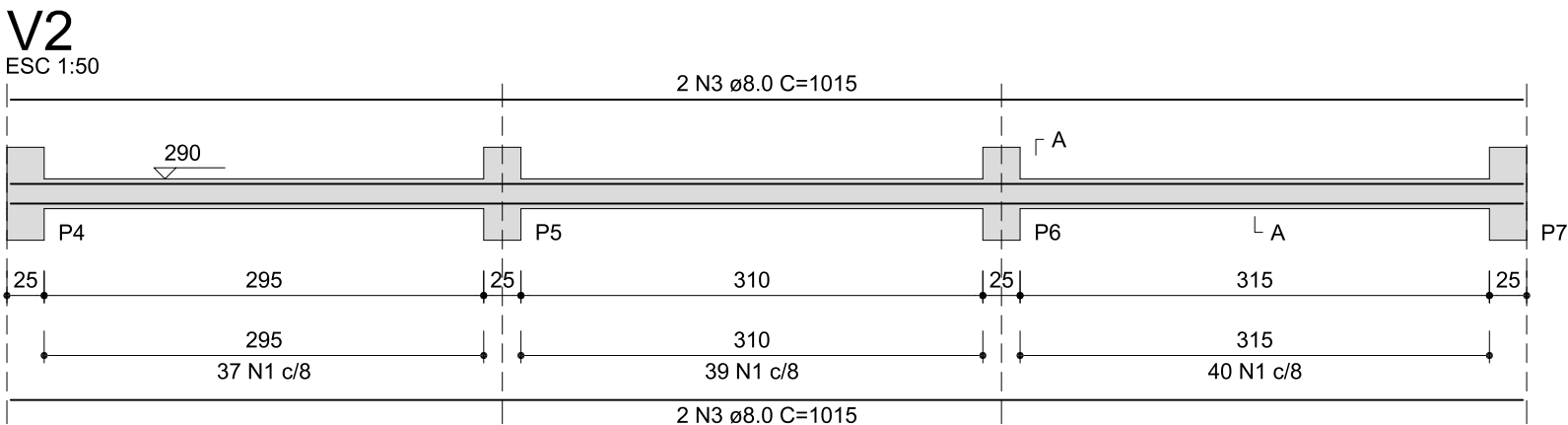


SEÇÃO A-A

ESC 1:25

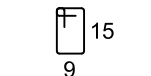
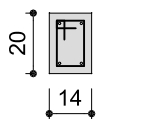


116 N1 ø5.0 C=59

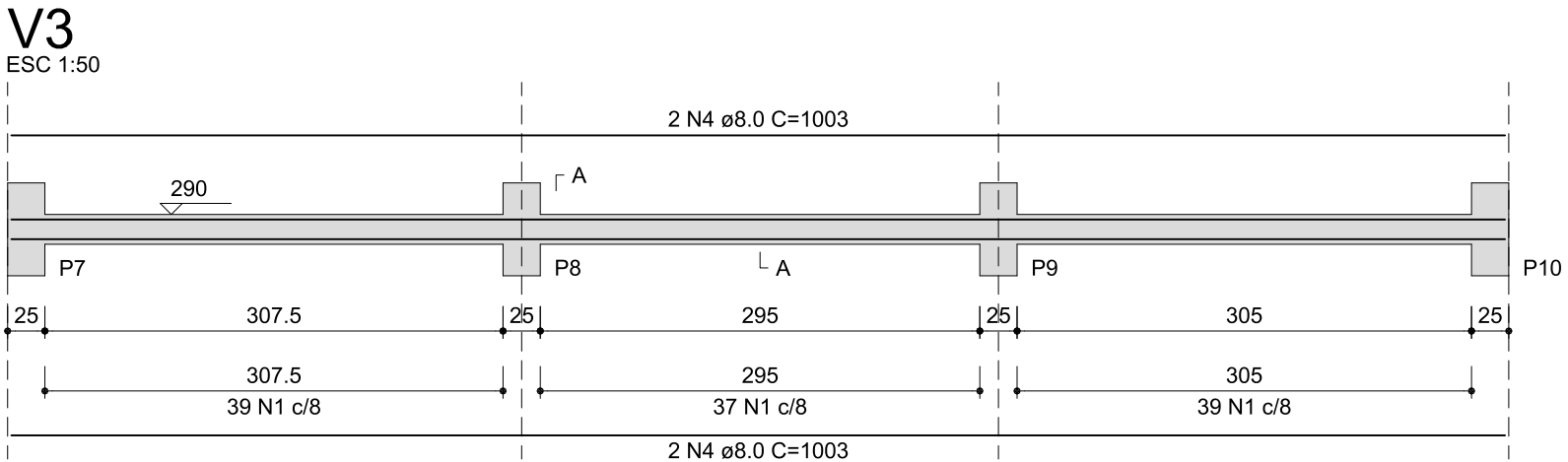


SEÇÃO A-A

ESC 1:25

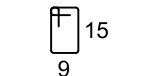
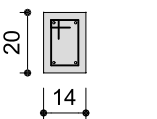


116 N1 ø5.0 C=59

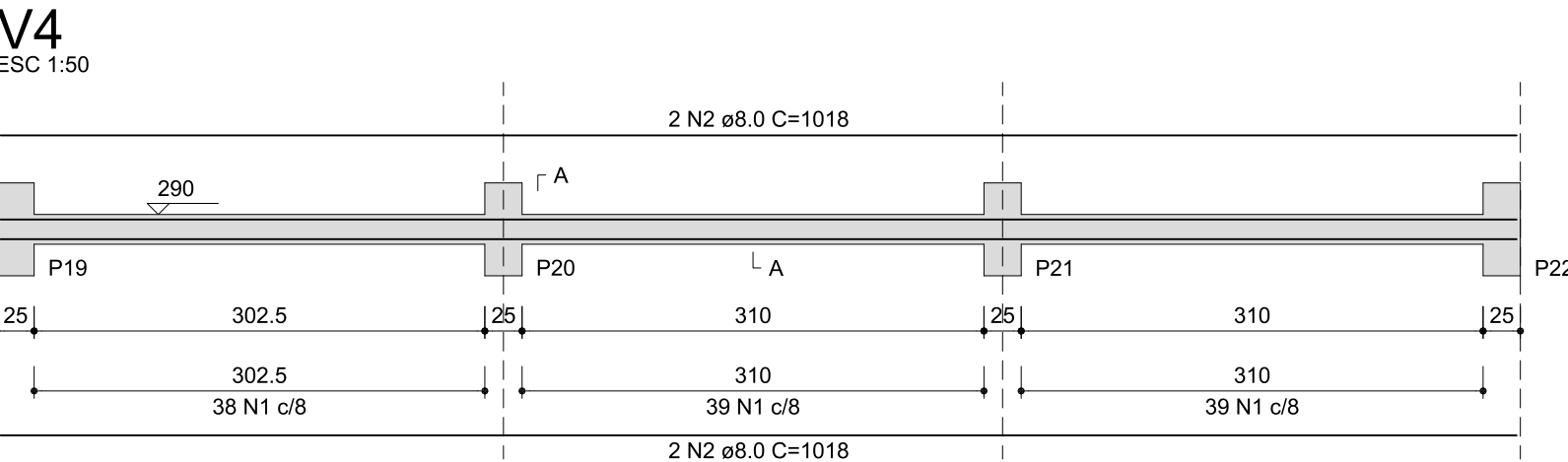


SEÇÃO A-A

ESC 1:25

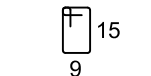
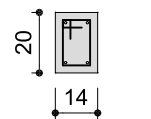


115 N1 ø5.0 C=59

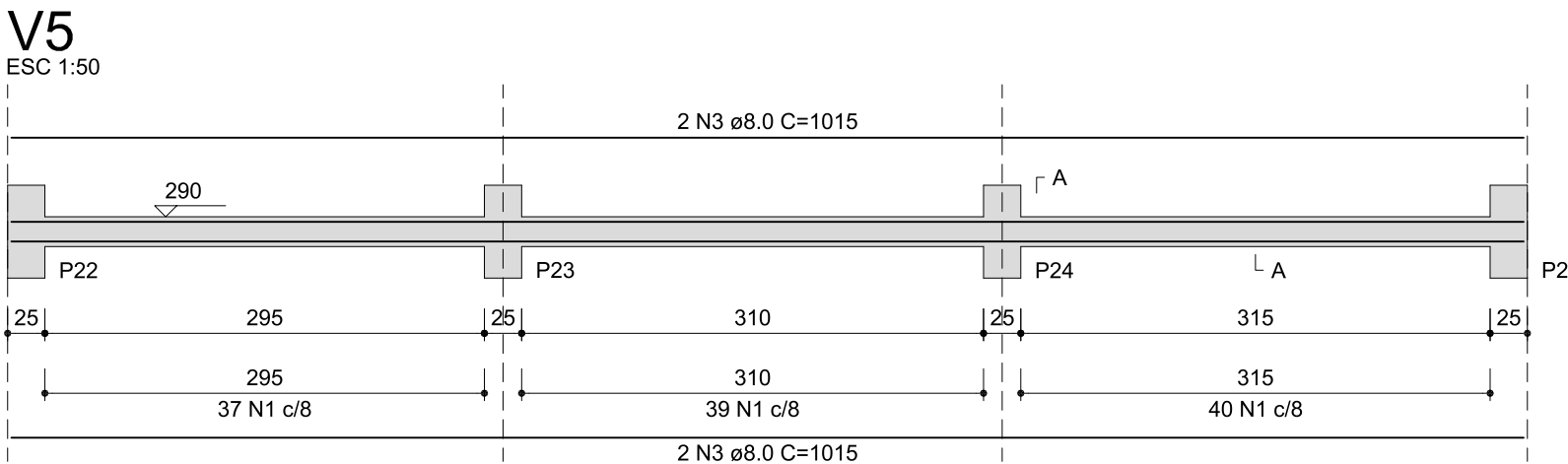


SEÇÃO A-A

ESC 1:25

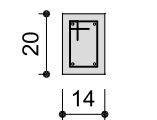


116 N1 ø5.0 C=59

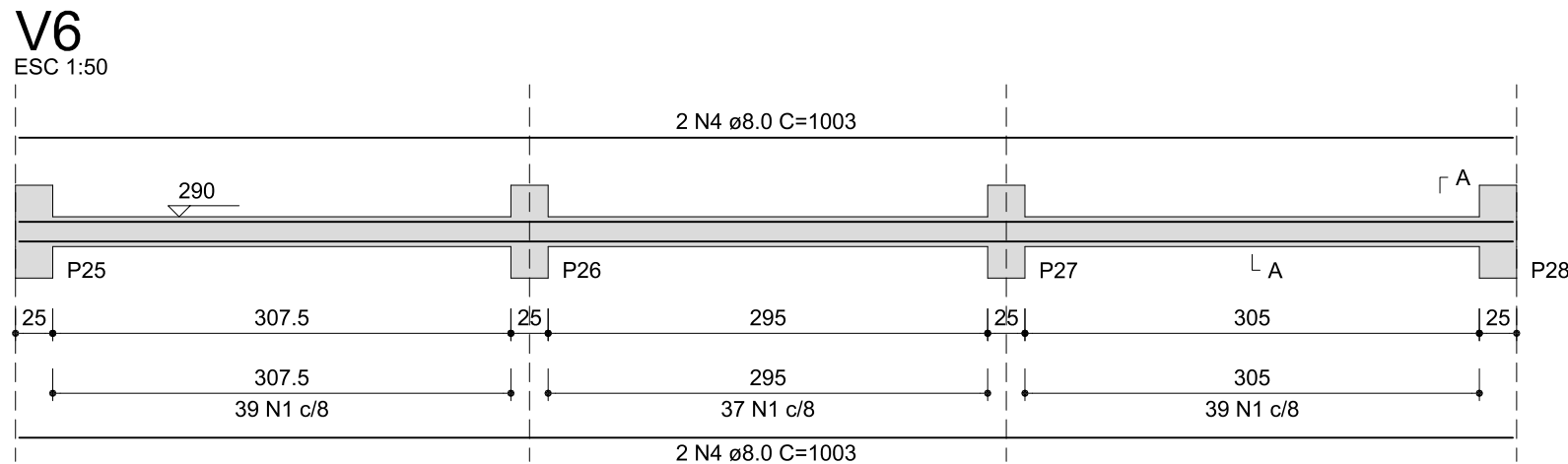


SEÇÃO A-A

ESC 1:25

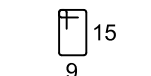
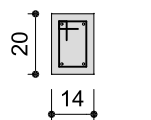


116 N1 ø5.0 C=59

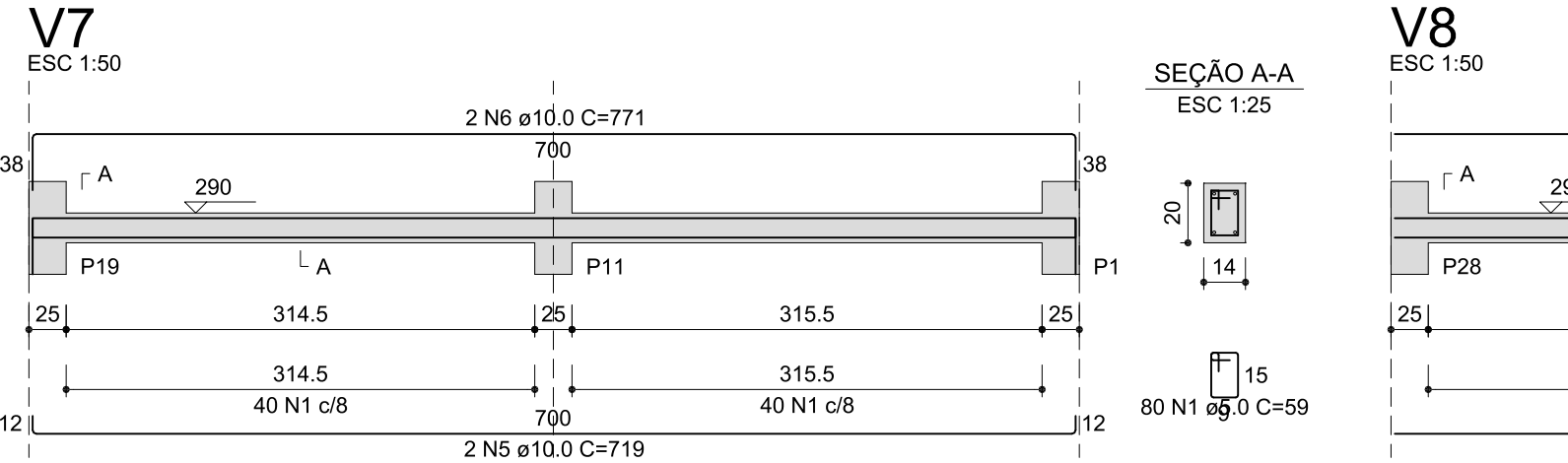


SEÇÃO A-A

ESC 1:25

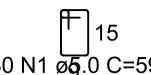
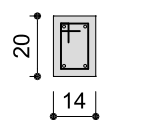


115 N1 ø5.0 C=59

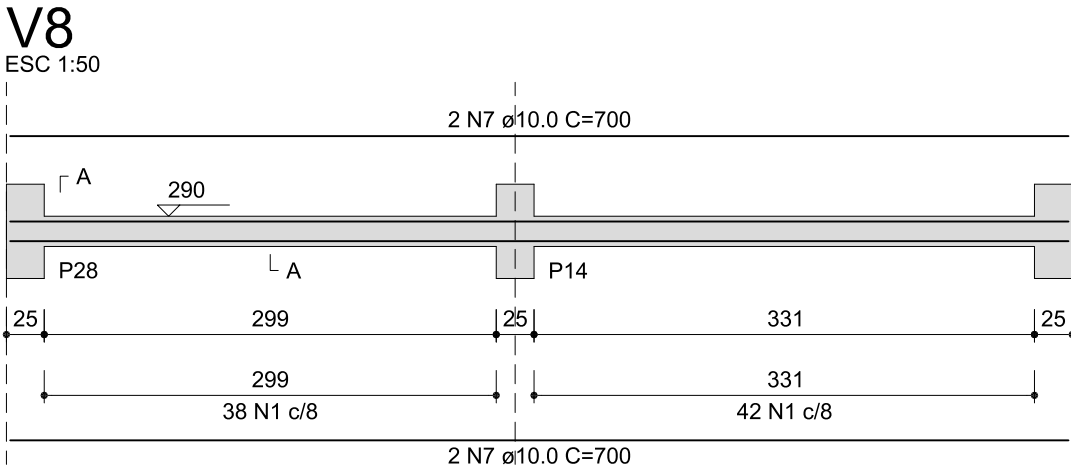


SEÇÃO A-A

ESC 1:25

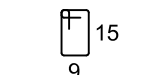
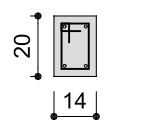


80 N1 ø5.0 C=59



SEÇÃO A-A

ESC 1:25



80 N1 ø5.0 C=59

RELAÇÃO DO AÇO

AÇO	N	DIAM (mm)	QUANT	C.UNIT (cm)	C.TOTAL (cm)
CA60	1	5.0	854	59	50386
CA50	2	8.0	8	1018	8144
	3	8.0	8	1015	8120
	4	8.0	8	1003	8024
	5	10.0	2	719	1438
	6	10.0	2	771	1542
	7	10.0	4	700	2800

RESUMO DO AÇO

AÇO	DIAM (mm)	C.TOTAL (m)	PESO + 10% (kg)
CA50	8.0	242.9	105.4
CA60	10.0	57.8	39.2
	5.0	503.9	85.4
PESO TOTAL (kg)			
CA50	144.6		
CA60	85.4		

Volume de concreto (C-25) = 2.10 m³

Área de forma = 40.55 m²



UFFS
UNIVERSIDADE
FEDERAL DA
FRONTEIRA SUL

Secretaria Especial de Obras-SEO

Avenida Fernando Machado, nº 108 E - Bloco 2 Sala 2.2.05
Centro, Chapecó, SC - Contatos: (0xx49) 2049-3113 / 2049-3118 - Site Oficial: www.uffs.edu.br

SECRETARIA ESPECIAL DE OBRAS:
SECRETÁRIO DE OBRAS: ENG. CIV. RODRIGO EMMER CREA/SC 109826-8
DIRETOR DE PROJETOS: ENG. CIV. FÁBIO CORRÊA GASPARETTO CREA/SC 067205-5

FISCALIZAÇÃO DE OBRAS:
CHAPECO/SC: ENG. CIV. FÁBIO ALEX ZENARO CREA/SC 103121-3
ENG. ELETRIC. MATHEUS TODESCATTI CREA/SC 111551-1
ENG. CIV. PAULO ROBERTO HENDES CREA/SC 107012
CERRO LARGO/RS: ENG. CIV. CANISIO ROQUE SCHMIDT CREA/RS 43769
ENG. CIV. JULIANA ANA CHIARELLO CREA/RS 127986
ERECIM/RS: ENG. CIV. FÁBIO ONETTA CREA/PR 64187-D
LARANJEIRAS DO SUL/PR: ENG. CIV. FABRÍCIO BALESTRIN CREA/PR 127466
REALIZA/PR:

DIRETORIA DE PROJETOS - SEO:
ARQ. URB. ADRIANA FREITAG MIGOTT CAUIBR A41125-6
ARQ. URB. WELLINGTON TISCHER CAUIBR A59629-9
ENG. ELETRIC. SILVIO ANTONIO TESTON CREA/SC 094639-9
ENG. ELETRIC. VICTOR LACERDA DA SILVA CREA/SC 143788-6
ENG. SANIT. ADEMIR TANCINI CREA/SC 113589-2
ENG. MEC. DANIEL ESPIG CREA/SC 114137-1
TEC. MEC. GIOVANI FÁVERO CREA/SC 093527-0
TEC. ELETROTEC. DIEGO GONATTO CREA/SC 119381-4
A.T.I. LEANDRO PEREIRA

LOCAL:
PASSO FUNDO - RS

OBRA:
ANEXO II

PROJETO:
PROJETO ESTRUTURAL

CONTEÚDO:
DETALHAMENTO VIGAS - NÍVEL 290

ENDEREÇO:
RUA CAPITÃO ARAÚJO, 20, CENTRO

FASE:
PROJETO EXECUTIVO

REVISÃO Nº:
R00

DATA:
29/07/2019

DESENHADO POR:
RODRIGO EMMER

NOME DO ARQUIVO:

ESCALA:
1:25; 1:50

TAMANHO FOLHA:
297 x 765

Nº PRANCHA:

05
06

ANEXO II_UFFS_PP_EST-VIGAS.DWG