

Relação do aço

AÇO	N	DIAM (mm)	QUANT	C.UNIT (cm)	C.TOTAL (cm)
CA60	1	5.0	725	80	58000
CA50	2	8.0	4	1018	4072
	3	8.0	4	1054	4216
	4	8.0	4	1015	4060
	5	8.0	4	1051	4204
	6	8.0	2	233	466
	7	8.0	4	1003	4012
	8	8.0	4	1037	4148
	9	8.0	2	404	808
	10	8.0	2	438	876
	11	8.0	2	229	458
	12	8.0	2	224	448
	13	8.0	2	258	516
	14	8.0	2	252	504
	15	8.0	2	276	552
	16	8.0	4	397	1588
	17	8.0	2	341	682
	18	8.0	2	375	750
	19	10.0	4	195	780
	20	10.0	2	719	1438
	21	10.0	2	745	1490
	22	10.0	2	708	1416
	23	10.0	2	714	1428
	24	10.0	2	363	726
	25	10.0	2	382	764
	26	10.0	2	700	1400
	27	10.0	2	725	1450
	28	12.5	2	724	1448
	29	12.5	2	744	1488

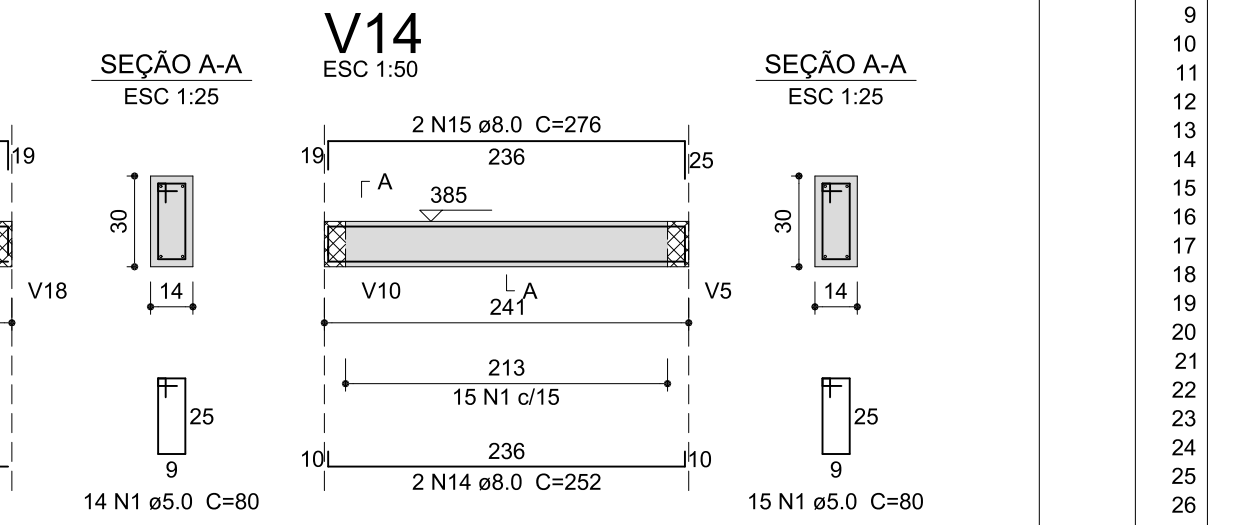
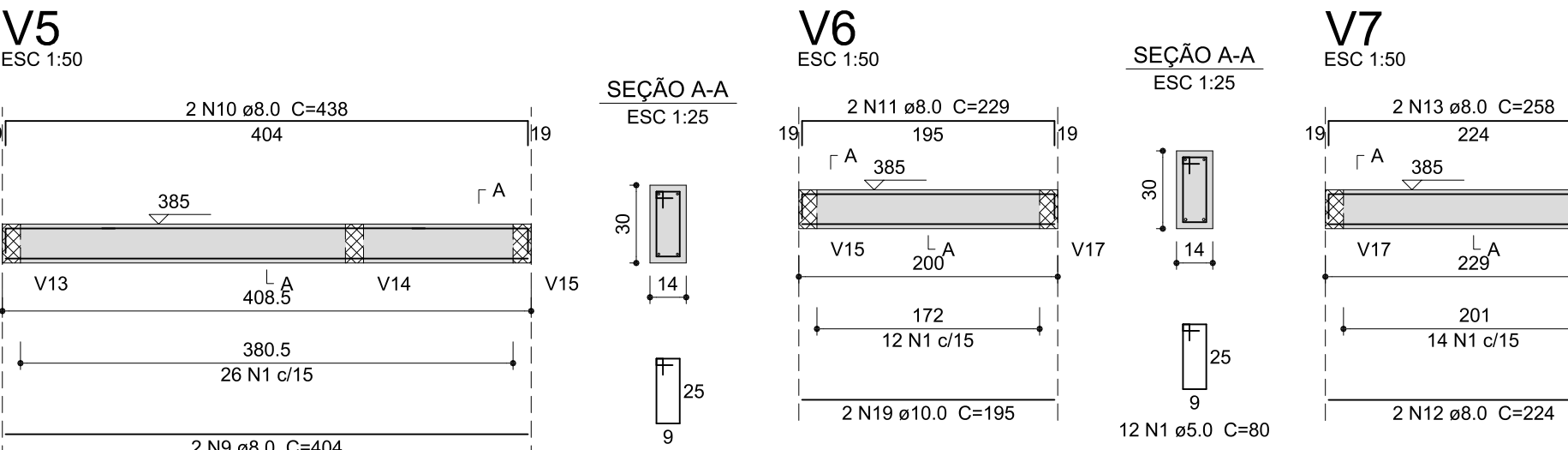
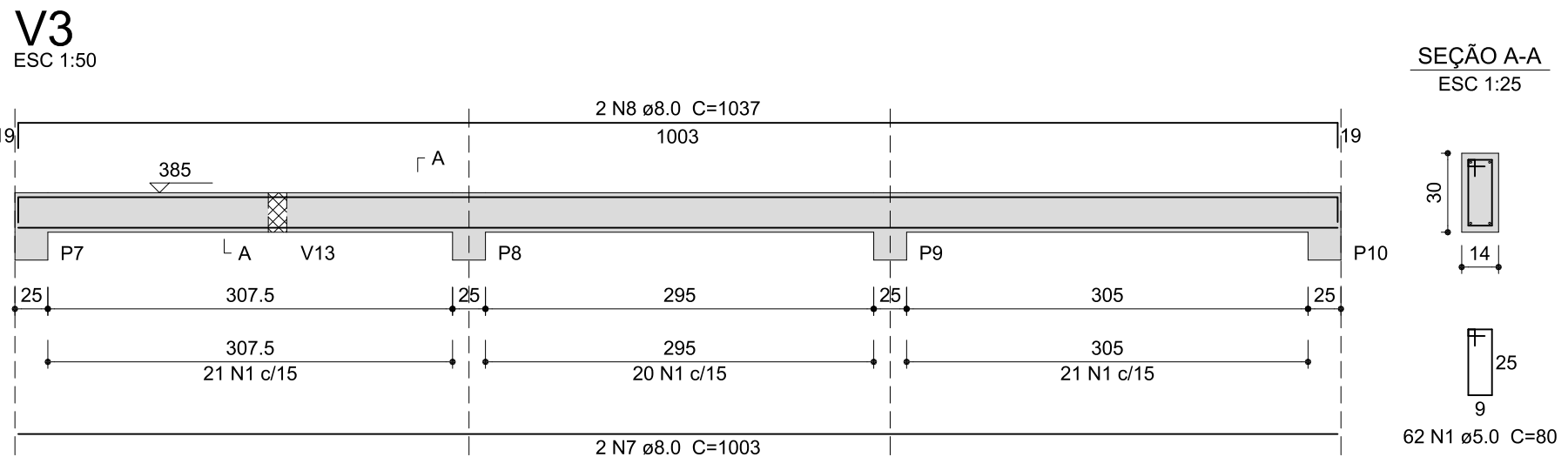
Resumo do aço

AÇO	DIAM (mm)	C.TOTAL (m)	PESO + 10 % (kg)
CA50	8.0	323.6	140.5
	10.0	109	73.9
	12.5	29.4	31.1
CA60	5.0	580	98.3

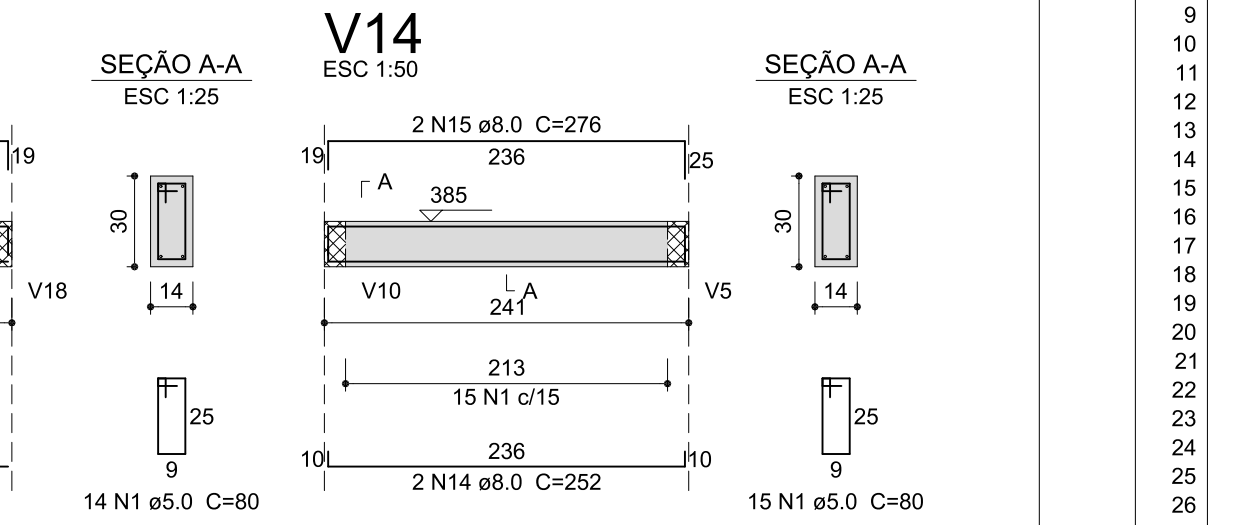
PESO TOTAL (kg)

CA50	245.4
CA60	98.3

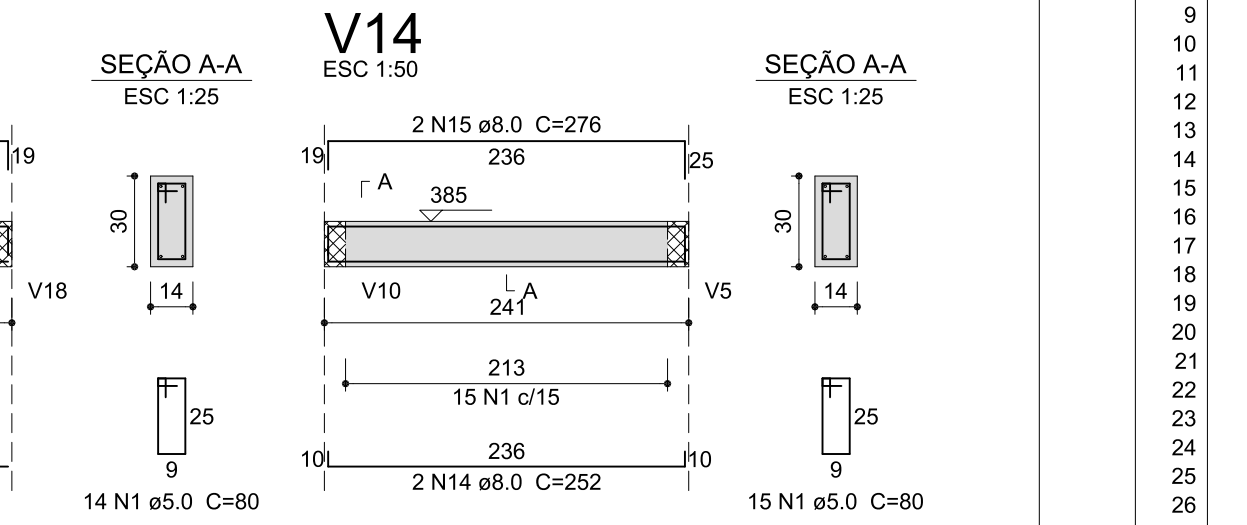
Volume de concreto (C-25) = 4.73 m³  
Área de forma = 83.39 m²



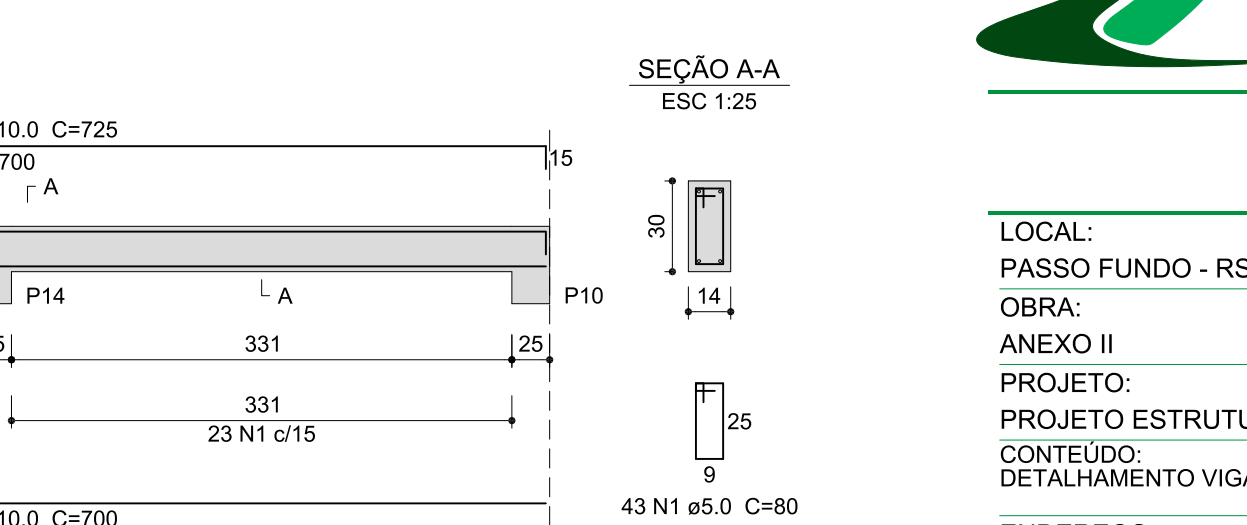
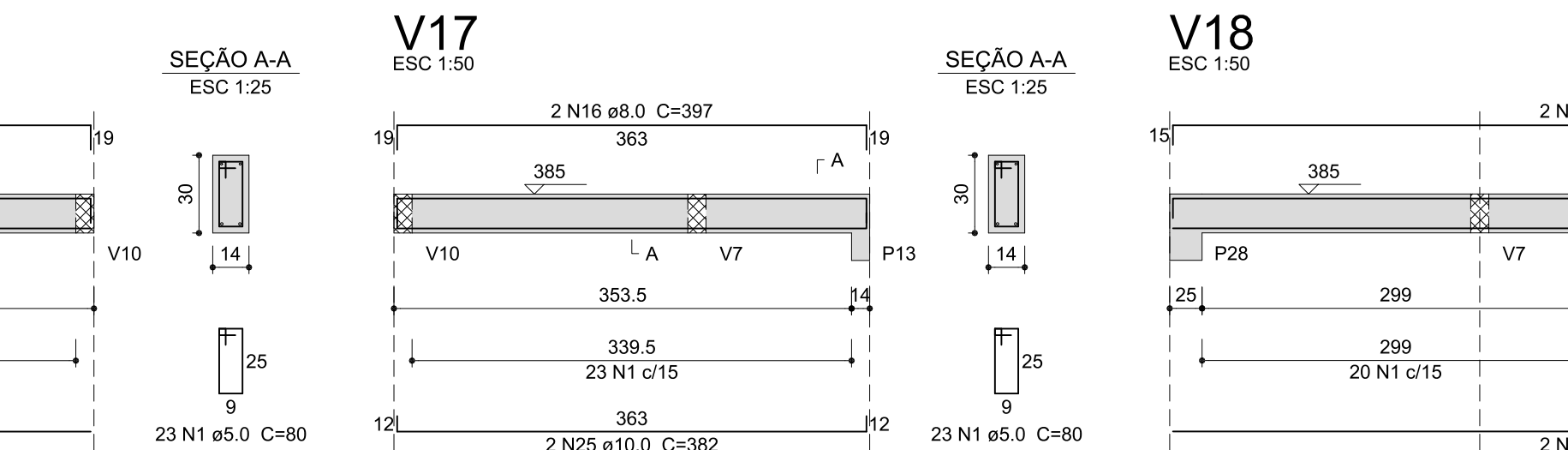
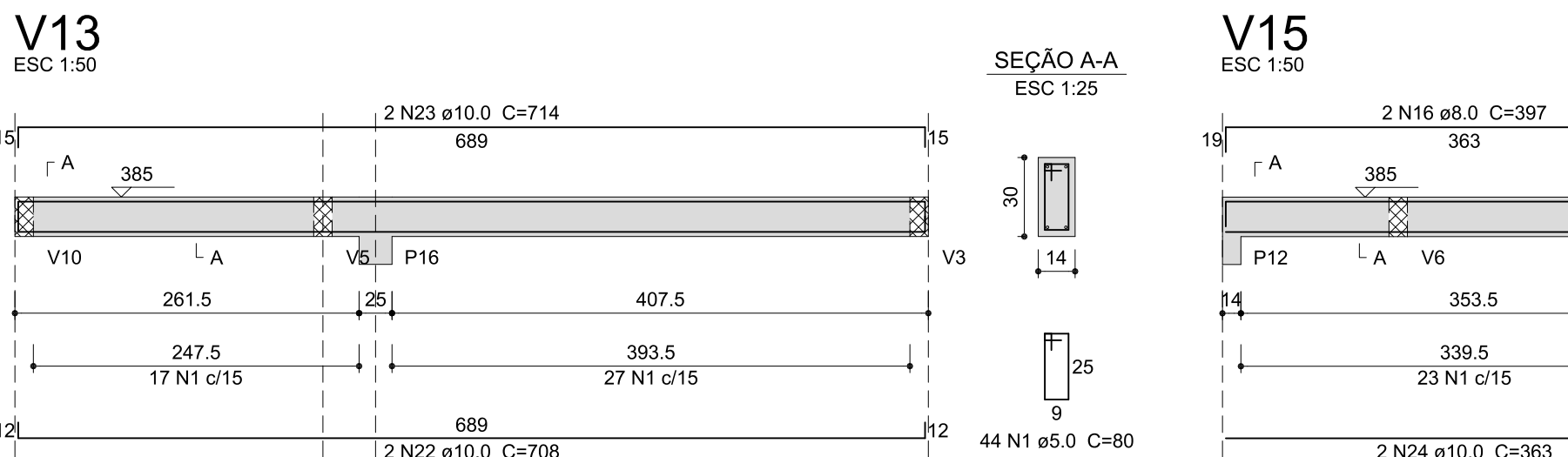
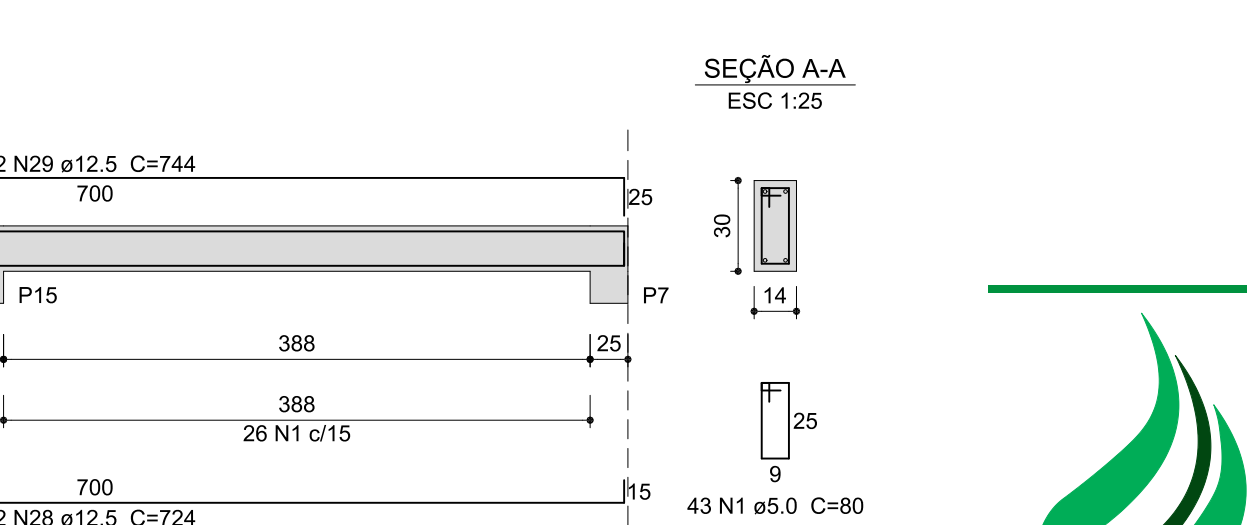
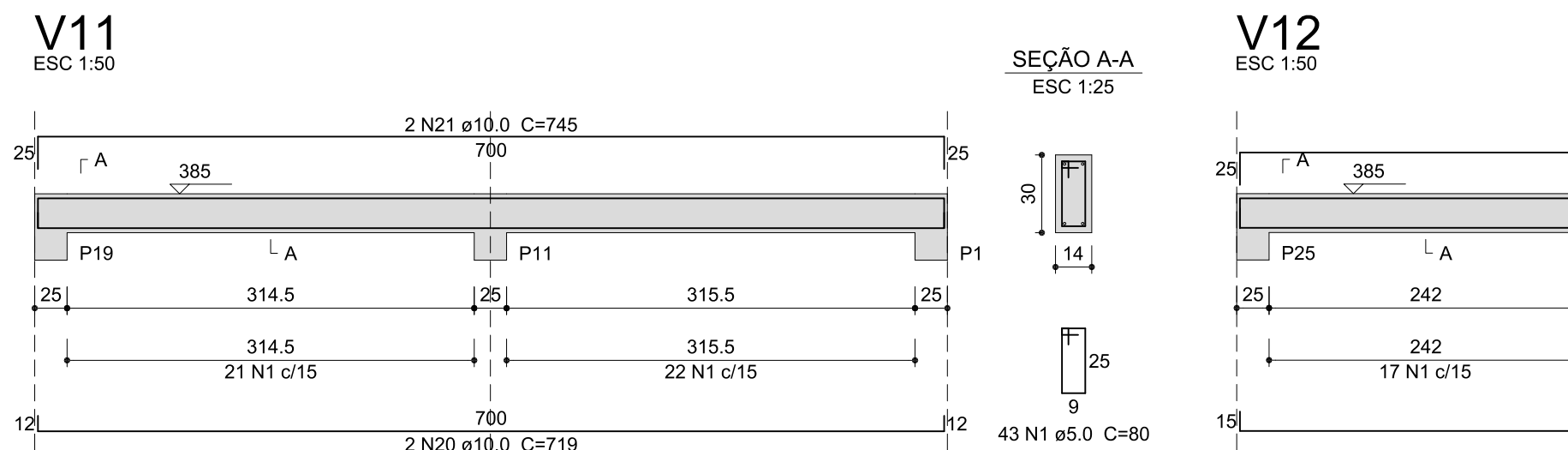
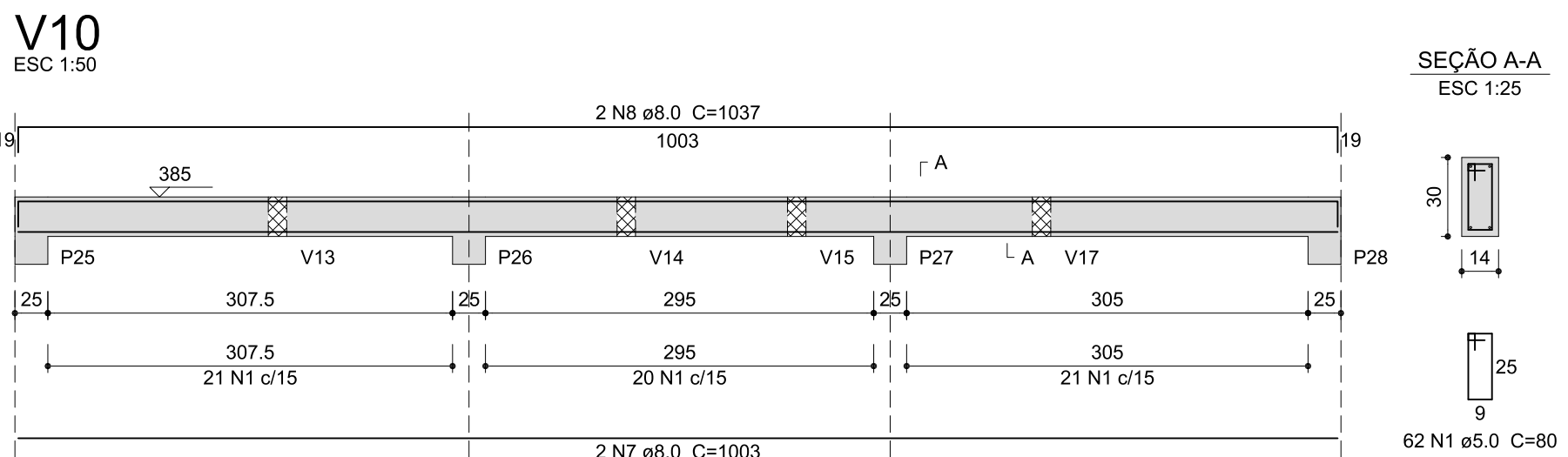
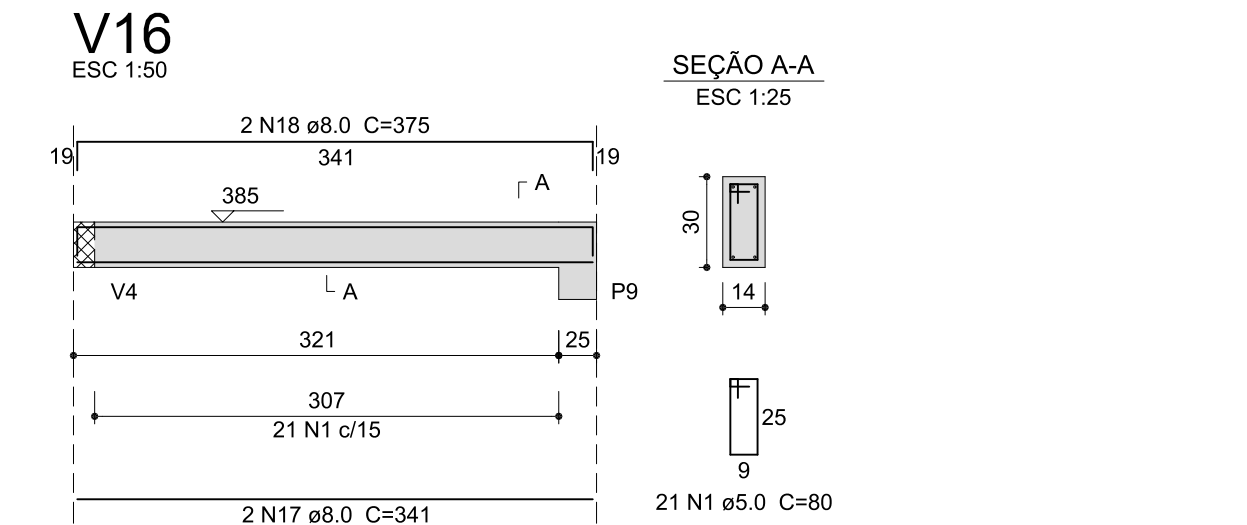
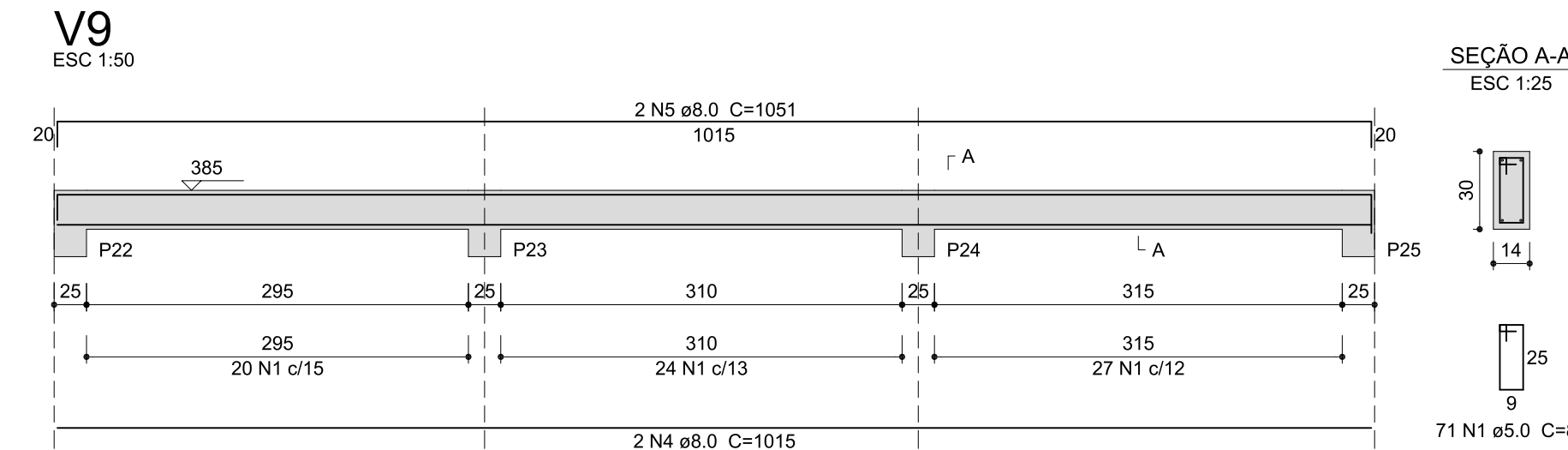
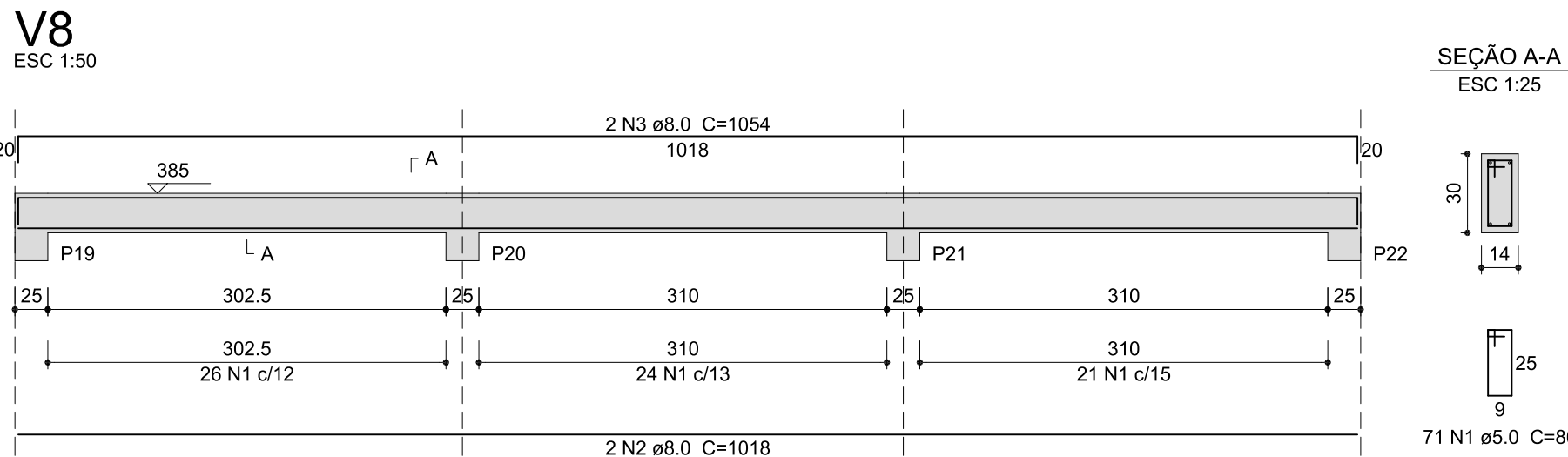
12 N1 ø5.0 C=80



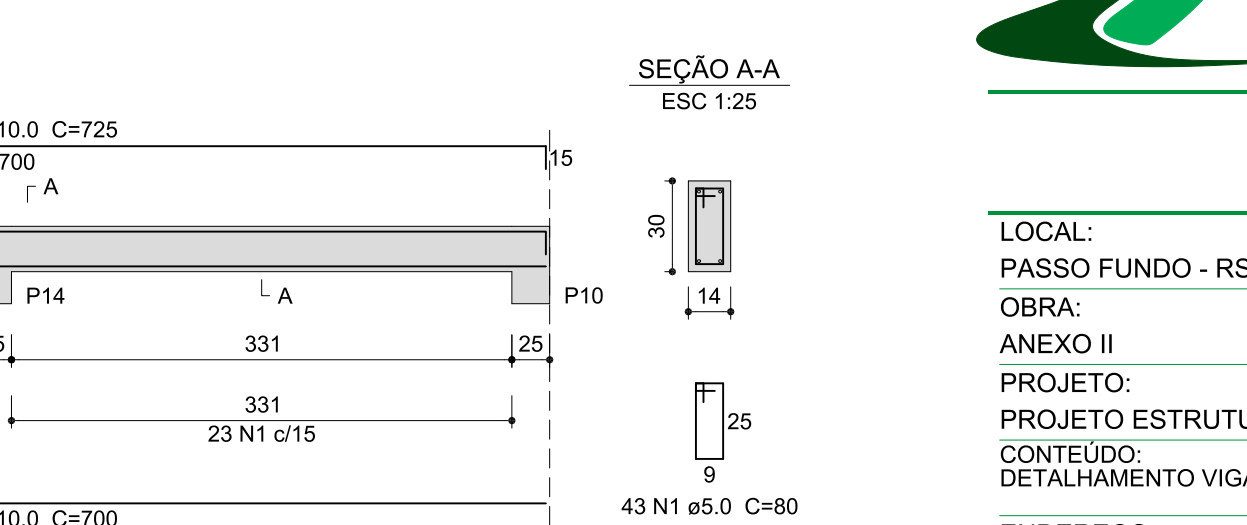
14 N1 ø5.0 C=80



15 N1 ø5.0 C=80



23 N1 ø5.0 C=80



43 N1 ø5.0 C=80



LOCAL: PASSO FUNDO - RS	FASE: PROJETO EXECUTIVO	ESCALA: 1:25; 1:50
OBRA: ANEXO II	REVISÃO Nº: R00	TAMANHO FOLHA: 420 x 841
PROJETO: PROJETO ESTRUTURAL	DATA: 29/07/2019	Nº PRANCHA: 1507 06
CONTEÚDO: DETALHAMENTO VIGAS - NÍVEL 385	DESENHADO POR: RODRIGO EMMER	06
ENDEREÇO: RUA CAPITÃO ARAÚJO, 20, CENTRO	NOME DO ARQUIVO: ANEXO II_UFFS_PP_PE_EST-VIGAS.DWG	06